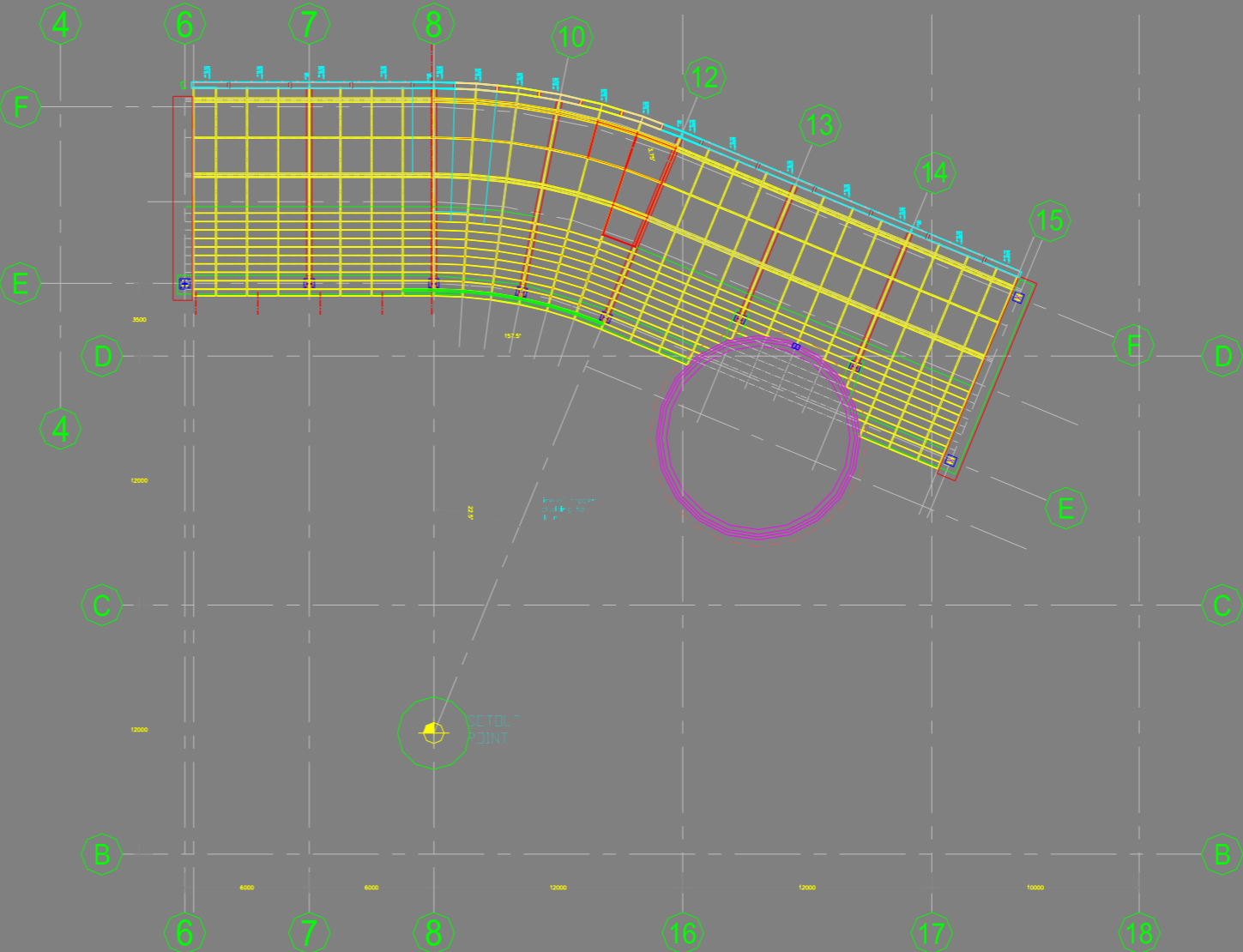
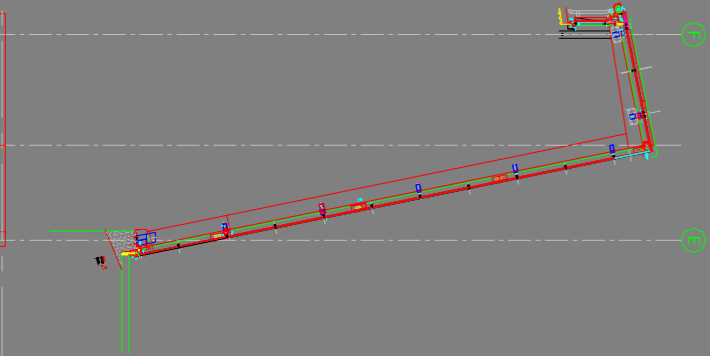
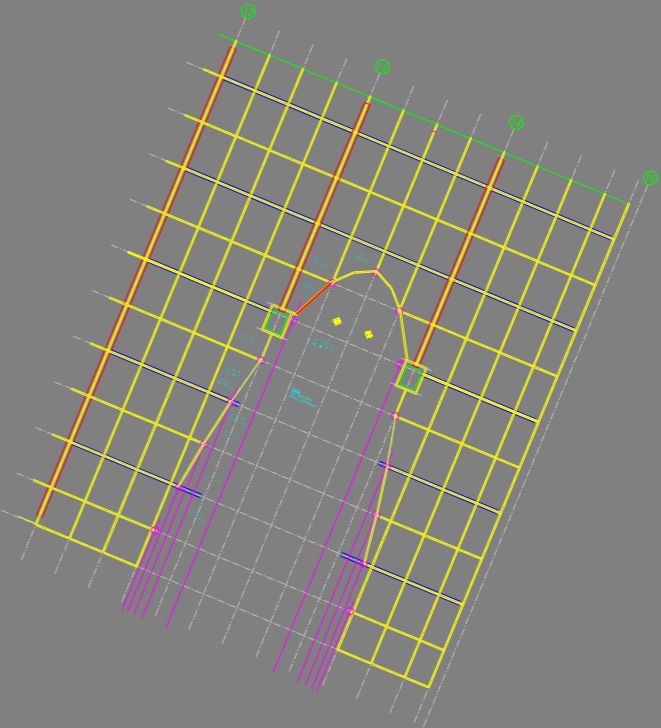


Caledonian University Glazing

CMM were employed by specialist glazing contractor Systems Aluminium on this £15M contract. Our brief was to produce full, working drawings for the 21m high atrium as well as extensive clerestory glazing.

The production phase of the project required more than 250 working drawings to be derived from CMM's 3D AutoCad models.

Architects **BDP**



client

Systems Aluminium

cmm
ARCHITECTS