

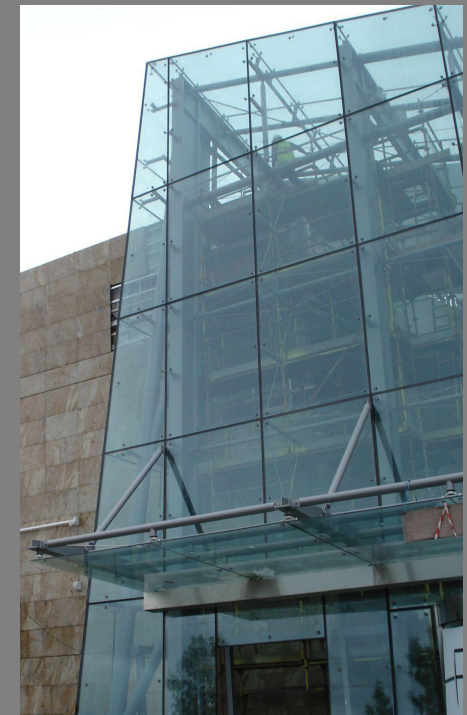
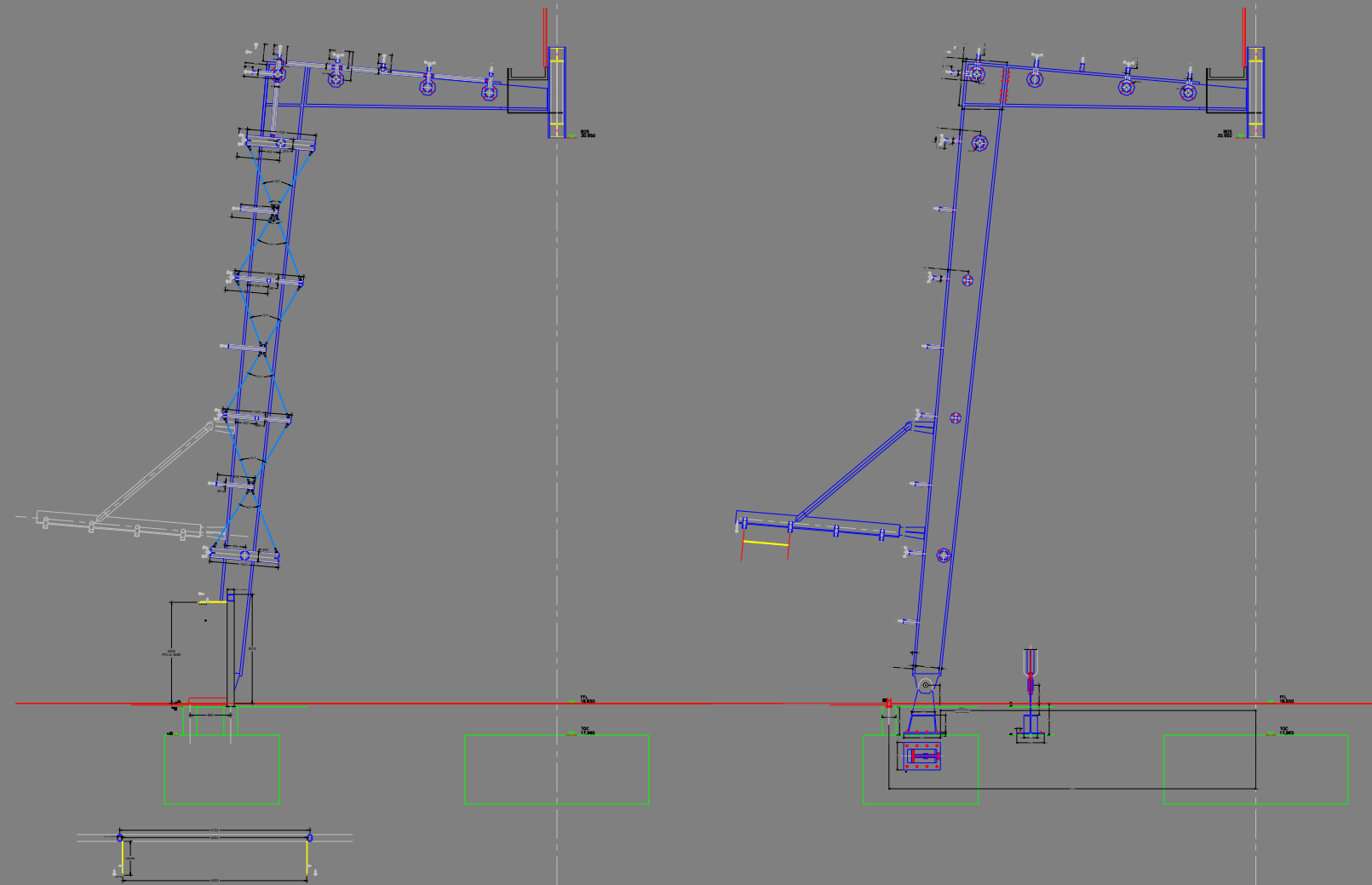
Silverburn, Glasgow Entrance Glazing

CMM were employed by specialist glazing contractor Systems Aluminium on this iconic retail project at the Silverburn Shopping Center, Glasgow.

Our brief was to produce full, working drawings for the complex glazing systems, curtain walling and canopy.

The production phase of the project required more than 220 working drawings to be derived from CMM's 3D AutoCad models. Schedules of components and steelwork dimensional coordination.

Architects BDP



client

Systems Aluminium

cmm
ARCHITECTS